

Draft

Maries Co. R2 Re-Entry Plan

2020-2021

The Maries R2 School District is committed to equity and access to quality instruction for all students supported with safe and best practices during the pandemic. We have the responsibility to be responsive and meet the needs of all students including supports for students with disabilities. All students must have opportunities to achieve academic success that is accessible, personalized, relevant and responsive.

Students have two options for returning to learning.

1. Traditional Schedule
2. Virtual Schedule

Traditional Schedule: Open schools as traditionally as possible adhering to safety guidelines and precautions. Students would be on campus and in the classrooms.

Virtual Schedule: This would be provided by an on-line company (Apex or Educere). It will be entirely completed online without a district teacher. A Declaration of Intent is required for parents choosing the virtual model. It is for the complete semester and students cannot return to in-seat learning until the end of the semester of enrollment. Those parents wanting to enroll in virtual instruction should contact their building principal. This requires reliable Internet access and an electronic device. A hybrid method is not available at this time. The deadline for choosing this learning option is August 12.

Symptoms of Covid-19 (Symptoms may appear 2-14 days after exposure): Cough, Shortness of Breath/Difficulty Breathing, Fever, Chills, Muscle Pain, Sore Throat, New loss of taste or smell.

COVID-19 is mostly spread by respiratory droplets released when people talk, cough or sneeze. Individuals should be reminded not to touch their face and to wash hands frequently.

- On the first day of school and throughout the first week, safety procedures will be taught and practiced in our classrooms. Parental support will be critical in providing a safe environment.
- Teachers and staff will be asked to complete a self-monitoring each morning before arriving at school and to take their temperature daily before arriving at school to monitor their health in regards to Covid symptoms.
- Parents will be asked to self-monitor their children each morning before sending to school and to take their temperature daily before putting them on the bus or dropping them off at school.

Maries Co. R-2 Re-entry Plan

During this Covid-19 pandemic, our district has been practicing social distancing and doing what has been necessary to prevent community spread of this disease. Our plan for re-entry is color coded and provides for several scenarios in our community and how to educate our students and maintain a campus that offers safe options for all of our students, families, and staff. The re-entry plan does take into consideration that a percentage of our students do not have adequate broadband or access to technology should at home learning become necessary.

We believe that the best place for students to learn is in the classroom with teachers and peers. We believe that our students benefit the most from in-seat instruction. However, we also believe that safety of our students, staff and families is equally as important.

The District has a plan in place to make sure students receive instruction on standards missed during the pandemic closure of the fourth quarter of the previous school year. We understand concerns about the loss of instruction. The teachers have plans in place to cover any missed standards.

Green: A Green status indicates that our district continues to have a low rate of positive Covid cases in our community. Green status would include transportation and full attendance on campus. Parents will be required to screen their student's health at home before coming to school. Students/Staff with a fever, cough, loss of sense of taste/smell, should stay at home and contact your health provider. After school activities would be permitted with healthy hygiene practices. Cafeteria meals will be served in the cafeteria with a reduced number of students for each shift. Students will be screened in their first hour classrooms. Staff would use a self-reported health screening. A school nurse would be on duty to screen students who do not feel well. An Isolation Room will be used for any students showing symptoms to wait away from others for parent pick-up. Masks are encouraged but will be left to the discretion of the parent. The custodial staff will complete hourly sanitizing of restrooms and all high traffic areas. High touch surfaces made of plastic or metal on the playground will be cleaned routinely.

Masks are encouraged for individuals who are at higher risk of becoming ill or for any student or staff member that feels uncomfortable or feels the need to wear a mask.

Parents that feel it is unsafe for their child to attend on campus would participate in an online software program for instruction. Parents would need to make contact with the building principal to enroll in the virtual instruction. The instruction will not come from a teacher on staff. The parent would need to commit to a semester at a time for virtual instruction.

Yellow: A Yellow status indicates that there is a significant number of Covid cases in our community. No community spread has occurred. The Health Department is monitoring the community and positive cases. Transportation will be limited and full on-campus attendance

will continue with possible modifications to 2 days per week or half day instructions. Depending on the guidelines from the Department of Health, a 1 day per week instruction schedule may need to be implemented as well. Meals would be served in the classrooms. Elementary specials would be provided in the classroom. Directional methods will be put on the floors in hallway travel.. Bathrooms would be sanitized after each class uses the bathrooms. Hourly sanitizing would continue. Athletic events would not allow spectators – students only. Facility use would be discontinued for any activity not school related. The district nurses will focus on preventative measures such as: performing wellness checks and monitoring for concerning symptoms, sending staff and students home when sick, promoting frequent hand washing/sanitizing, monitoring attendance.

Red: A Red status indicates that there is significant community spread and the Health Department has made the recommendation that schools be closed until the numbers decrease in the community. The district nurses will assist in the assessment of risk and collaborate with the Health Department and Administration. Students would be required to do remote instruction. Teachers would be on campus and contact would be made daily with each student. Everyone who enters the campus will be required to have a health screening, including daily temperature. Special Education students would continue to receive services by appointment. Hotspots will be available at the Fire Departments in Bland and Vichy. Desktop computers will be provided to students who do not have access to broadband internet. Teachers will provide all necessary instruction to a jump drive. No school sponsored athletics or extracurricular activities.

Maries Co. R2 will NOT use a Hold Harmless Grading procedure for the 2020-2021 school year.

Students will be required to complete and submit assignments/assessments while in Red Status. Teachers will be taking grades. Teachers will be in-touch with students using a variety of methods several times a week for every child.

Transportation:

Before getting on the bus: Parents should take their child’s temperature at home. Students should wash their hands before getting on the bus. Students should be encouraged to sanitize when they get on the bus. (Sanitizer will be available at each bus door.)

Green	Yellow	Red
Students sit with family groups. Seating charts will be required.	Students sit in family groups. Seating charts will be required.	No transportation. Classes will not be held on campus. Remote instruction.
Parents who can transport their children to and from will be encouraged to do so.	Parents will be encouraged to carpool with other parents to avoid the bus.	

Drivers sanitize buses in between routes.	Drivers will sanitize the bus in between routes.	
Driver wipes clean the high touched areas (tops of seats, handrails)	Drivers will wipe clean the high touched areas.	
Driver wears a mask or face shield. The seat behind the driver will remain open.	Driver will wear a mask or face shield. The seat behind the driver will remain open.	
Windows will be down to increase circulation while students are on the bus.	Students will be encouraged to wear a mask on the bus.	
Hand sanitizer will be available when students get on and off the bus.	Windows will be down when weather allows to increase air circulation.	
Students getting off first will sit in the front of the bus. Students getting off last will sit in the back of the bus.	Students getting off first will sit in front. Students getting off last will sit in the back of the bus.	
Parents will be encouraged to sanitize backpacks, sports bags and musical instrument cases nightly.	Parents will be required to sanitize any extra items being brought on the bus with their students.	
Students will remain seated. Driver will excuse one seat at a time.	Students who live within 3 miles of the school will not be provided transportation.	
Drivers will arrive for drop off at designated times. One bus will be released at a time.	Staggered drop off times will continue.	
Drivers will arrive for pick up one bus at a time. Students will be released one bus at a time for pick up.	Staggered pick-up times will continue.	
Drivers will receive training on sanitizing and protocols for sick students. <hr/> Drivers will complete a daily rider sheet and turn in to their supervisor at the end of each route for contact tracing.	Drivers will receive additional training on sanitizing and protocols for sick students. <hr/> Drivers will complete a daily rider sheet and turn in to their supervisor at the end of each route for contact tracing.	

Parent Drop Off and Pick Up: During parent drop off, students may not be dropped off until after 7:30 a.m. and must remain in their personal vehicle until they are at the drop-off points in order to encourage social distancing. Students will report directly to their assigned first hour classrooms on arrival. There will be no social gathering

During pick-up, parents should remain in their cars in the pick up line. Parents should practice social distancing if they are picking up their student to walk home.

Classrooms:

	Yellow	Red
Teachers will take temps upon arrival in the first hour/beginning of the day classrooms.	Face masks when students cannot social distance (bus, hallway)	Remote learning will occur. Not all courses will be offered via remote learning. Teachers will be in contact at the start of remote learning .
Signage will be posted communicating how to stop the spread.	Clean/disinfect frequently touched surfaces multiple times daily.	Teachers will be in contact daily with students.
Sanitizing products will be in the classrooms. Teachers will be required to disinfect desks and chairs and high traffic contacted areas regularly throughout the day.	Masks or face shields will be provided to staff. They will be required for those who can wear them.	Grades will be used. No hold harmless grading. Students will be held responsible for 6 hours of educational activity daily, assignments being turned in on specified dates and times in order to receive credit. Students are to be active in class discussion and need to be available Tuesday through Friday during class time for online lectures and lessons.
Students will practice healthy hygiene. i.e. Washing hands, covering mouths when coughing/sneezing.	Bottled water only. No water fountain use.	Teachers will be in the classrooms daily in order to provide instruction to students in a variety of manners. Students will be held to the same standards that the students who optioned into virtual learning are held to.
Desks will be placed 3 feet apart (or as far apart as possible) and facing in the same direction.	Conduct deep cleaning daily by custodial staff in the evenings.	Building will be disinfected and heavy sanitized during closure.

Face masks provided by parents for students who wear them. (Parent decision)	Additional times for transition times in the hallways and between classes. Staggered release into the hallway.	
Disinfect water fountains hourly. Encourage water bottles from home.	Students will participate in hybrid instruction. Students may be at school half a day or two days each week. The other time they will use remote learning. If the guidelines for reduced class size decrease, students may be at school one day per week in cohorts.	
Students will be encouraged to have their own supplies. No sharing of classroom supplies by students.		
A schedule of restroom times will be developed for each restroom to allow for sanitizing of the restrooms and reduce the number of students standing in line for restroom use.		

To support the work of our custodial staff and their efforts to disinfect:

Teachers will be asked to leave their classrooms at a reasonable time each day. Before staff leaves, they should clean their desks, clean whiteboards, stack chairs and clear the floor area. They should stay out of their classrooms after cleaning/sanitizing each day.

Lunchroom:

Green	Yellow	Red
Sanitize cafeteria tables between use	Students will receive a meal to go and will eat in the classroom.	Meals will be served through a pick-up method on campus.
Disposable utensils, plates and other products will be utilized to assist in reducing risk.	Disposable utensils, plates and other products will be utilized to assist in reducing risk.	
Students will sit on only one side of the table.	Students will wash and sanitize before entering the cafeteria.	

Additional lunch shifts will be added to reduce the number of students in the cafeteria at one time.	Cafeteria will be disinfected at the beginning and end of meal prep and service.	
Outside table use will be encouraged at the HS level when weather permits.		
Students will not serve themselves. All food items will be placed on trays by cafeteria workers.		
Students will wash and sanitize before entering the cafeteria.		
Cafeteria will be disinfected at the beginning and end of meal prep and service.		

Visitors to Our Campus:

While we deeply appreciate the assistance of visitors, at this time, we will not allow any outside guests in the buildings. Please understand that the more adults we introduce into our learning environments, the more risks we are introducing to our students and staff. It is a small and short term adjustment we are making for the health of our students and staff. Parents will be limited to the main office.

Volunteers will need to provide a daily self-report prior to being admitted to the building. (Temperature check, list of symptoms reviewed, contact with COVID).

Virtual IEP/504 Meetings will be encouraged.

Staff and students will sanitize their hands when entering a classroom.

All areas used by the public will be disinfected following use. A fee may need to be charged due to the additional cleaning and disinfecting time required.

When a Child, Staff Member or Visitor Becomes Sick At School:

The district will isolate the person with symptoms. Symptoms include: fever, constant cough, sore throat, congesting, breathing difficulties, loss of taste/smell.

- The parent or guardian of the student will be contacted immediately to come and get their child.
- Siblings or others in the household will be screened for COVID symptoms.

- The area in which the person was will be cleaned and disinfected.
- The person will be advised not to return until they meet the below criteria.

If the person receives a positive test, the Health Department will do contact tracing and notify impacted families. Close contacts will be asked not to return to campus for 14 calendar days following a positive test in the household or in immediate family that they had contact with for more than 15 minutes.

When a confirmed case of COVID-19 or other communicable disease has entered the school, a short term closure may occur based on guidelines from the Health Department. Students may be dismissed 2-5 days for heavy cleaning. All extra-curricular activities will be canceled for that time period.

If a positive case is determined to have been at school, the classroom will be closed off and not available until cleaned and disinfected.

Returning to School After Exclusion:

Once a student or employee is excluded from the school environment, they may return if they satisfy the recommendations of the CDC.

Currently our guidelines are:

1. **Untested:** Persons who have not received a test proving or disproving the presence of COVID-19 but experience symptoms may return if the following three conditions are met:
 - a. They have not had a fever for at least 72 hours (that is three full days of no fever without the use of medication that reduces fever); and
 - b. Other symptoms have improved (for example, when your cough or shortness of breath have improved); and
 - c. At least seven (7) calendar days have passed since your symptoms first appeared.
2. **Tested.** Persons who experienced symptoms and have been tested for COVID-19 may return to school if the following three conditions are met:
 - a. They no longer have fever (without the use of medicine that reduces fevers); and
 - b. Other symptoms have improved (for example, when your cough or shortness of breath have improved); and
 - c. They have received two negative tests in a row, at least 24 hours apart.
3. **Tested with no symptoms:** Persons who have not had symptoms but test positive for COVID-19 may return when they have gone seven (7) calendar days without symptoms and have been released by a healthcare provider.

Students may also return if they are approved to do so in writing by the student's health care provider.

Siblings or other students in the Household: If a student is excluded from school due to COVID-19 symptoms or have had a positive test, his or her siblings or other students living in the same household will be sent home and the above requirements will need to be met before return.

Self-quarantine: If a student or employee has recently had close contact with a person with COVID-19 symptoms or diagnosed with COVID-19 or has recently traveled from somewhere

considered to be a "hot spot" by the CDC, the district may exclude the student or employee from the school building and recommend that they self-quarantine for 14 days. Contact with the school nurse will be required prior to anyone returning from a vacation out of state. The nurse will determine the risk based on activities/area positives before determining the length of self-quarantine.

Sports/Extracurricular Activities:

Per the Missouri High School Activities Association (MSHSAA),

Green Phase:

Each activity must appoint an individual who will be responsible for ensuring screening is implemented and any positive screen or test must meet the protocols for return to participation. This will be the coach or advisor.

Every coach/director/advisor is encouraged to wear a mask or face covering until the screening is completed on all participants.

If there is a positive finding on their COVID-19 screen, the student will be sent home immediately. If a participant's parents are not present, they will be escorted to an isolation room away from others while they wait for their parents.

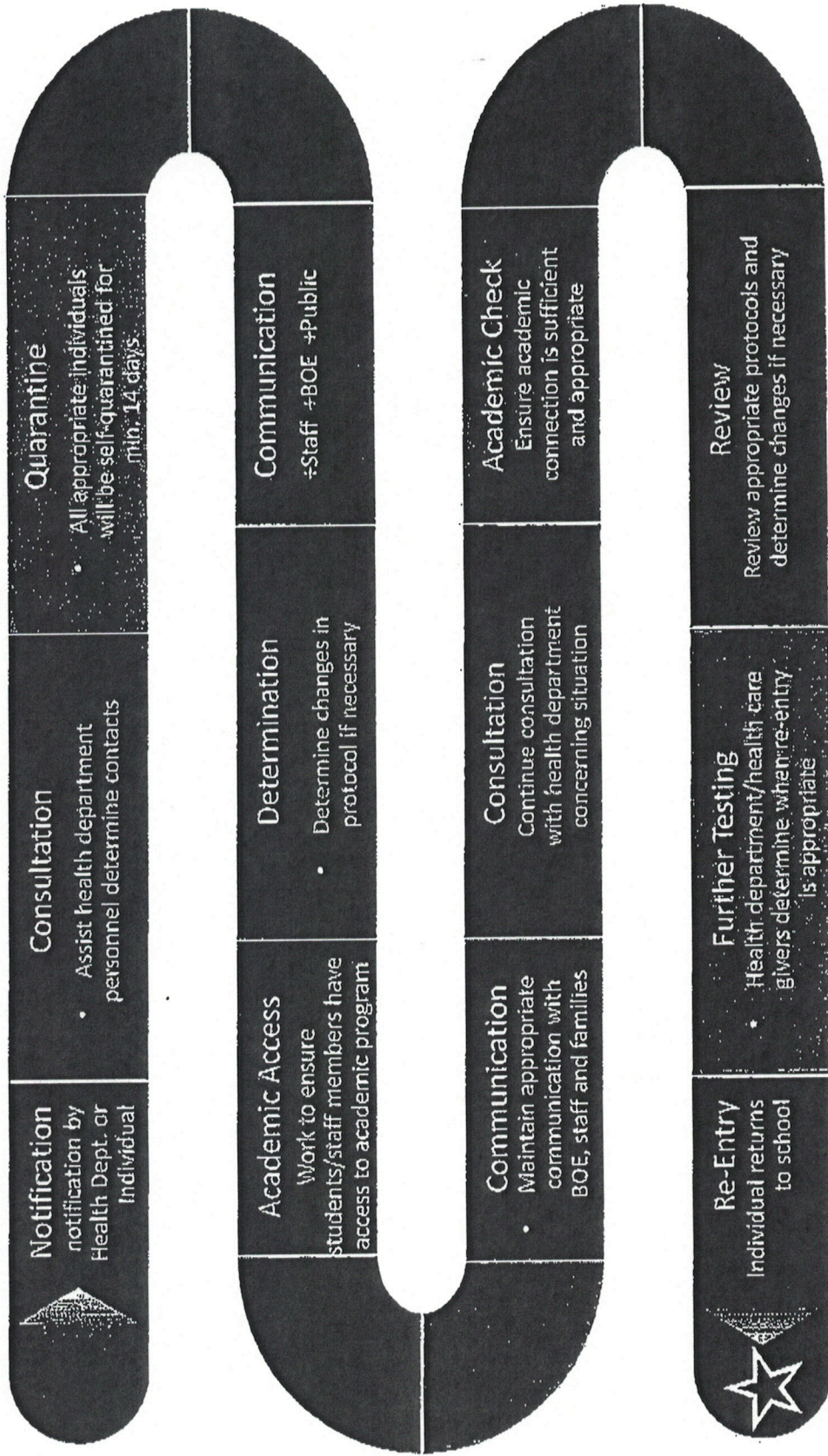
Written clearance from a healthcare provider, documentation of a negative test outcome or after a 14 day quarantine period, shall be required prior to return to participation.

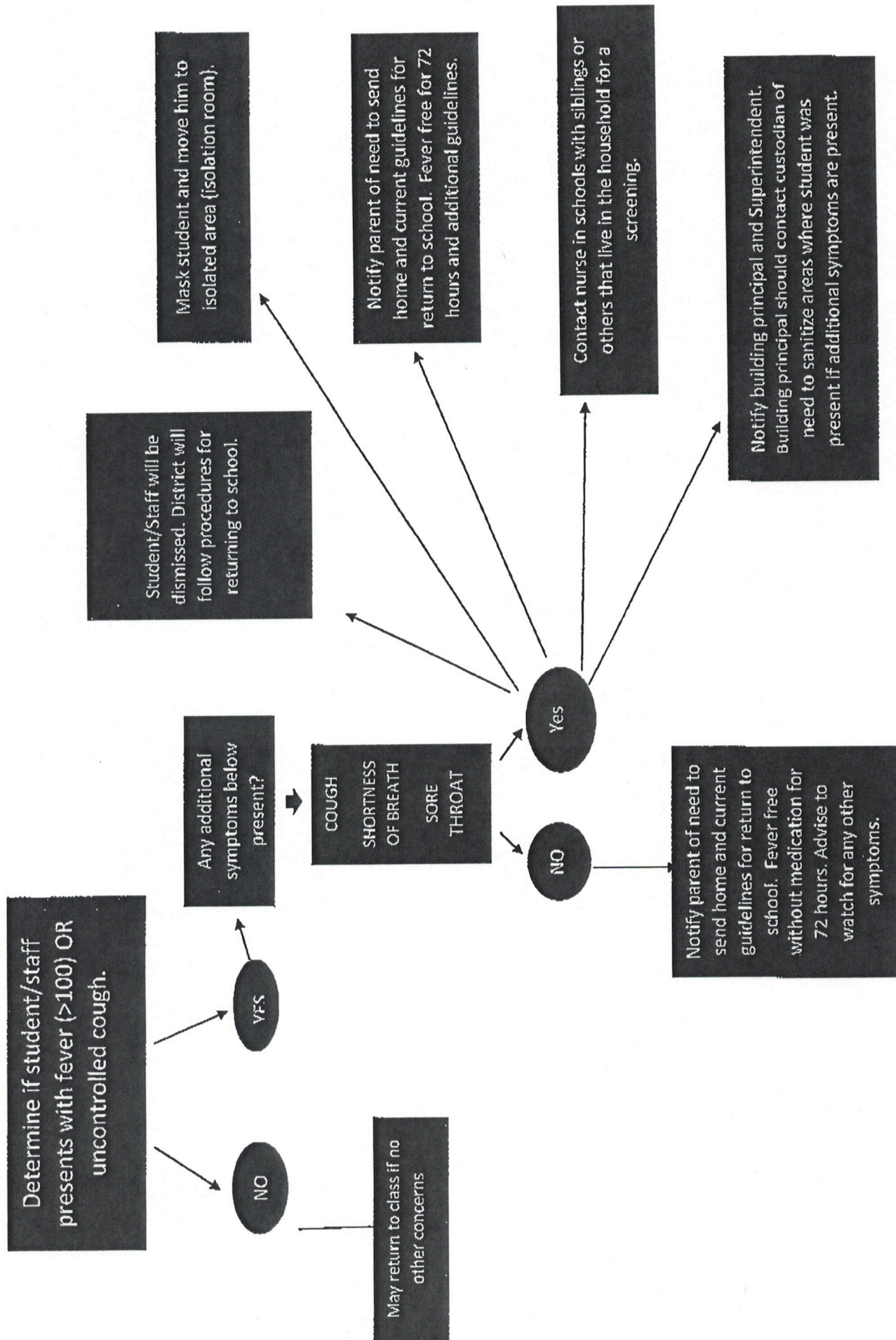
Prior to a practice, hard surfaces within the facility should be wiped down and sanitized.

Individuals should wash their hands with soap before practicing. Hand sanitizer should be available.

Schools are encouraged to offer live streaming of games/contests/performances to reduce attendance at events.

Social distancing will be recommended in bleachers.





Maries County R-11

School District

503 W. Third St. • PO Box 819 • Belle, Missouri 65013
300 S. Main St. • PO Box 10 • Bland, Missouri 65014

DECLARATION OF INTENT

August 2020

Student Name:

Student Address:

Student Phone Number:

Student Grade:

Check each statement below:

I am declaring my intent for my child to receive virtual instruction for the first/second semester of 2020-2021 school year. (Please circle the requested semester.)

I understand that this is a semester long commitment and I will not be able to return to in-seat coursework until the end of the semester.

I have internet in my home and a device for my child to use for this coursework.

I understand that an attendance log will need to be kept daily and submitted to the district at the end of the semester in order for my child to receive credit for their instruction. I also understand that a district employee will have access to my child's virtual coursework account to verify completion of coursework and progress.

Parent Signature:

Date:

Dr. Lenice Basham
Superintendent
573-859-3800

Alice Taylor
Curr. Dir / A+
573-859-6114

Garrett Haslag
High School Principal
573-859-6114

Denise Baldwin
Middle School Principal
573-646-3912

Vanessa Feeler
Elementary Principal
573-859-3326